



## OTHER PRODUCTS

Expanded Metal  
Bar Grating  
Floor Plate  
Stainless Steel  
Bearing & Aircraft Quality Steels

## SERVICES

- Saw Cutting
  - Single piece or production cutting; up to 24" DIA
- Oxyfuel Flame Cutting
  - Cut to size plate or special shapes; up to 12" Thick
- Plasma Cutting
  - Cut to size sheet or special shapes; up to 1" Thick
- Shearing
  - Up to ½" Thick
- Rebar Bending
- Grinding
- Steel Delivery
  - Next day delivery on stock orders on our own trucks
- Steel Sourcing
  - Full truckload Mill deliveries; Sourcing hard to find materials with niche suppliers
- Project Management
  - Multi-step value added services through our partners
- Stocking Programs/Warehousing



**HEADQUARTERS – ERIE, PA**  
1301 Cranberry St. Erie, PA 16502  
(814) 453 - 4969

**WARREN OHIO DISTRIBUTION CENTER**  
490 North River Rd, Warren, OH 44483  
330) 395 - 9588



**PRODUCTS FOR:**  
**MACHINING**  
**FABRICATION**  
**CONSTRUCTION**

**OVER 100 YEARS**  
**OF STEEL SUPPLY CHAIN SERVICES.**

## COLD FINISHED STEEL BARS

### Cold Finished Rounds

- 1/8" DIA - 12" DIA

### Cold Finished Flats

- 1/8" X 1/4" - 4.5" X 8"

### Cold Finished Squares

- 1/8" - 6"

### Cold Finished Hex

- 1/4" - 4"

### Standard Grades

- 1018; 1045; 1141; 1144; 12L14; 1215

### Alloy Grades

- 4140; 4340; 8620

### Finishes

- Turned & Polished, Turned Ground and Polish, Annealed, Stress-Proof, Galvanized



## HOT ROLLED STEEL

### Hot Rolled Steel Bar

- |                   |                                     |
|-------------------|-------------------------------------|
| HR Rounds         | HR Flats                            |
| • 3/16" - 24" DIA | • 1/8" X 1/2" - 4" X 8"             |
| HR Squares        | HR Angle                            |
| • 3/8" - 7"       | • 1/2" X 1/2" X 1/8" - 8" X 8" X 1" |

### Hot Rolled Steel Plate & Sheet

- 24 GA (0.0232") - 22" Thick
- 48" wide min - 96" wide max X 48" long min - 240" long max

### Standard Grades

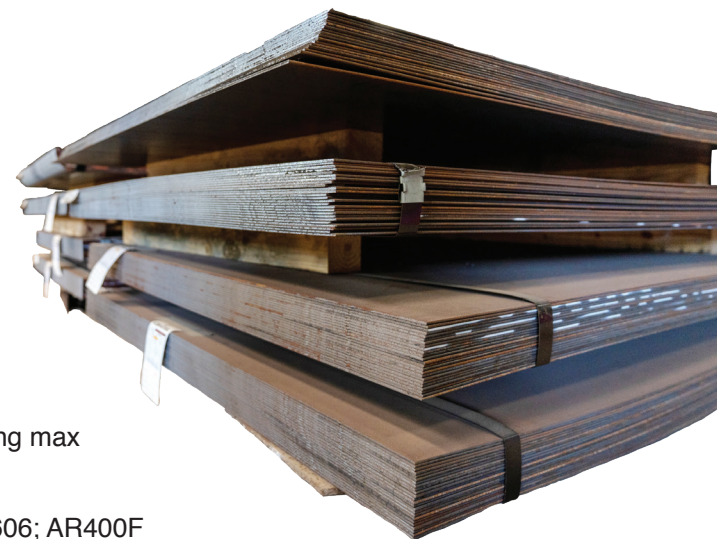
- A36; A1011; 1015; 1018; 1020; 1045; A572; A588; A606; AR400F

### Alloy Grades

- 4140; 4142; 41L42; 4145; 4320; 4340; 43B17; 4820; 8620; 8822

### Finishes

- Pickle & Oiled; Annealed; Normalized; Quench & Tempered; Turned & Polished, Turned Ground and Polish, Annealed, Stress-Proof, Galvanized; Shot Blasted



## STRUCTURAL STEEL

### I-Beams

- S3 X 5.7# - S24 X 106#

### Junior Beams

- M6 X 4.4# - M8 X 6.5#

### Wide Flange Beams

- W4 X 13# - W40 X 65#

### Structural Channels

- C3 X 3.5# - C15 X 50#

### Ship & Car Channels

- MC3 X 7.1# - M18 X 58#

### Rebar

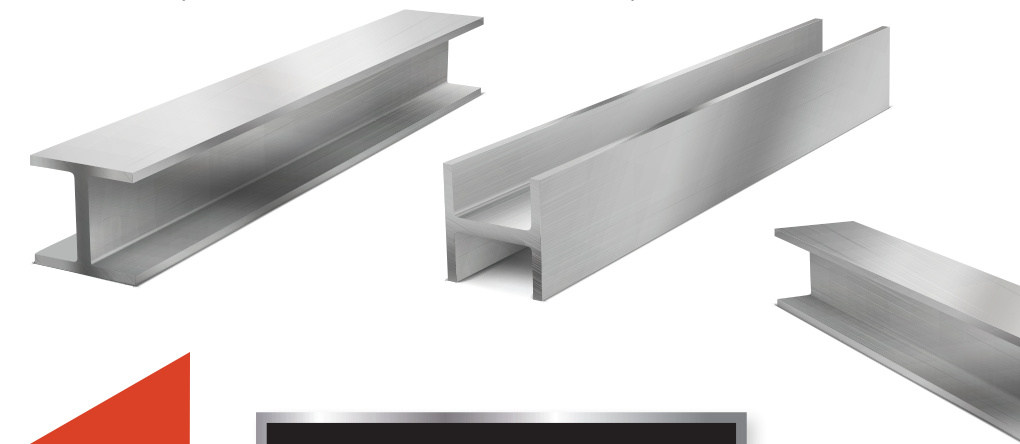
- #3 (3/8" DIA) - #14 (1-3/4" DIA)

### Standard Grades

- A36; A615; A992; A572; A588; A569; A706; A606

### Finished

- Galvanized



## TUBE & PIPING

### Pipe

- 1/8" DIA SCHD 40 & SCHD 80 - 8" DIA SCHD 40 & SCHD 80

### Round Tubing

- 1/4" OD X 0.68 ID - 24" OD X 22" ID

### Square Tubing

- 1/2" X 1/2" X 0.065" - 14" X 14" X 1/2"

### Rectangular Tubing

- 1" X 1/2" X 0.065" - 20" X 12" X 1/2"

### Standard Grades

- A513 Mechanical; A500 Structural; SAE J-524; SAE J525 Hydraulic; A53 Seamless; A106

### Finished

- Turned & Polished; Turned Ground & Polished; Painted; Lacquer Coated; Galvanized

